

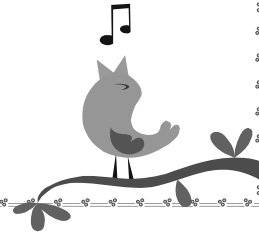


M.D. of Big Lakes Spring Newsletter 2011

Box 239, High Prairie AB TOG 1E0

Ph: (780)523-5955 Toll Free: 1-866-523-5955 Fax: (780)523-4227

Web: www.mdbiglakes.ca Email: biglakes@mdbiglakes.ca



Spring will soon be upon us...

Spring is a time for renewal. It is a time when the earth shakes off the chill and bitterness of winter in exchange for a warm soothing sun. The return of birds, leaves and flowers reminds us that life is constantly changing.

It has been a different winter with a fair amount of snow. Let us all hope for favorable weather conditions and a gentle spring thaw.

Hopefully the spring thaw will be kind in soil retention of moisture and the spring seeding will provide for the bounty of next Fall's harvest.

Soon we will be moving from winter road weights to the spring road restrictions. (details inside...)

**ATTENTION!! The MD is not responsible for Primary or Secondary Highways,
for your convenience you will find a list of contact numbers below.**

for your convenience you will find a list of contact numbers below.

Carillion Canada Inc.:

Richard Bruneau, High Prairie	780-536-5066
Graham Douglas, N.W. Superintendent	780-699-5039
Anthony Yates, Main Office – Vegreville	780-632-5063
Head Office – Toronto	416-233-5811

Alberta Transportation:

Rodney Johnston, High Prairie	780-523-0556
Fred Bickel, Slave Lake	780-849-7338
Bill Gish, Operations Manager, Peace River	780-624-6220
Wayne Franklin, Regional Director, Peace River	780-624-6280
Bruno Zutautus, ADM, Edmonton	780-422-2184
Honorable Luke Ouellette, Minister of Transportation	780-427-2080

On behalf of the Municipal District of Big Lakes Council and Staff,

We would like to express our deepest condolences to Mrs. Bev Eriksson on the passing of her husband John on February 8, 2011.

John was CAO for the MD for 13 years from 1994-2007.

Rest In Peace John...



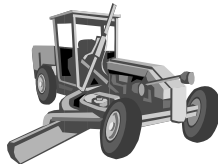
PUBLIC WORKS DEPARTMENT—Len Racher, Superintendant

As I drove to neighboring towns and cities this winter I developed an even larger appreciation for our Public Works staff.

Our hamlets were looked after very well and in a timely fashion. As families enjoyed the winter wonderland on the weekends our crews were hard at it missing out of the time with their families, therefore I would like to thank the wives and children that gave up there Husbands and Dads so the MD communities and road system's were safe.

There's a lot of snow out there and I hope the run off go's easy on us. We will be clearing ditches of snow where we normally have run off problems and watching for frozen culverts. If anyone see's a problem developing please let us know.

Thank you for your patience this year and have a trouble free spring and safe summer.



GRADING PRIVATE DRIVEWAYS

Grading of private driveways may be provided by the Municipal District to residents on a cost recovery basis.

The cost of each grading will be a minimum of \$35.00 + GST = \$36.75

Agreements are available at the M.D. Administration office in High Prairie

Driveways will NOT be graded unless Agreement is signed in advance.

NOTE: Private driveways are generally graded ONCE road maintenance is complete.

THE MUNICIPAL DISTRICT OF BIG LAKES

IS PLEASED TO ANNOUNCE THAT COUNCIL HAS ADOPTED ITS

NEW LAND USE BYLAW AND A MUNICIPAL DEVELOPMENT PLAN

The purpose of these Plans is to guide future growth of the MD of Big Lakes in a responsible, orderly and economic fashion, having due regard to the growth opportunities and environmental, social and economic constraints that exist within the municipality.

To see how the new plans could affect you and your upcoming development projects, have a look at them on the M.D.'s website at <http://www.mdbiglakes.ca/services/planning-and-devt>

PLEASE NOTE THE FOLLOWING FEE CHANGES

- Land Use Bylaw Amendment Residential:** Single Parcel - \$200.00 first lot
Multi-Parcel - \$100.00 per additional lot
- Land Use Bylaw Amendment Industrial:** \$250.00 first lot
\$100.00 additional lot
- Subdivision creating fewer than 4 lots:** Application Fee \$200.00
\$100.00 per lot created
\$60.00 per lot endorsement fee
- Subdivision creating 4 or more lots:** Application fee \$500.00
\$100.00 per lot created
\$60.00 per lot endorsement fee

Before You **BURN IT!** Get A **PERMIT!**

FIRE PERMITS REQUIRED !!

Albertans require permits starting April 1, 2011 in the Forest Protection Area By Order of the Minister of Sustainable Resource Development. Where you require a permit from the Municipal District—April 1, 2011 is still the start date for the new season until October 31, 2011

PLEASE ENSURE...That all winter burning has been extinguished properly to prevent holdover fires!

Fire permits will be issued by **Municipal District of Big Lakes** Fire Guardians.

Request for Fire Permits can be obtained by contacting your local Fire Guardian or by contacting the MD Administration Office please call 780-776-0007 to find out who your Fire Guardian is.

Residents in areas of the White Zone and Green Zone outside of this former no-permit zone will continue to get fire permits from the Alberta Forestry Service.



Remember the lighting of fires in the Municipal District of Big Lakes without a fire permit will be against provincial law.

According to the Forest and Prairie Protection Act, those who start fires without a permit or negligently with a permit may be subject to paying the costs of fire suppression and fines.



without a permit or negligently with a permit may be subject to paying the costs of fire suppression and fines.

Should you have any questions, contact John E. Gould (MD Fire Chief), Vicki Calhoon at the M.D. of Big Lakes office in Joussard @ 780-776-0007 or the Forest protection Division @780-523-6620.

If You Spot a Fire ! call collect 310-FIRE (310-3473) or #FIRE on the Telus Mobility Network.

Be FIRE SAFE! Never Leave Your Fire Unattended !!



2011 TAX YEAR

**Tax Notices will be mailed by
the third week of May,
with a due date of June 30, 2011.**

**Please contact the M.D. of Big Lakes if you
have not received your notice
By May 31, 2011.**



Agricultural Service Board Report

Amanda Nepstad, Agricultural Fieldman

Agricultural Services department of the M.D. of Big Lakes offers a variety of programming to assist ratepayers with agricultural concerns and to administer provincially legislated requirements under the Weed Control Act, Agricultural Pests Act, Soil Conservation Act, and the Animal Health Act.

Shelterbelt trees – orders for seedling trees through either PFRA (Prairie Shelterbelt Program) or Alberta Agriculture (Alberta Shelterbelt Program) will be shipped to, and distributed from the M.D. upon arrival in May. The deadline for applications for spring tree delivery is March 15th 2011.

However, as the deadline approaches, the available tree species may be limited. Application forms are available at the M.D. Administration office or through the following websites:

Prairie Shelterbelt Program (PFRA) www.agr.gc.ca/pfra/shelterbelt

Alberta Shelterbelt Program (Marketland) www.marketland.net/index

Rental Equipment – a small fleet of rental equipment is available for use by M.D. ratepayers. Renters are reminded that equipment must be returned in undamaged, clean condition, no later than 10:00 am on the day following the last day of the paid rental. Pick up times are 8:30 am to noon on first day of paid rental, unless prior arrangements are made for a later pick-up time. Further details and a complete list of rental equipment (with fee schedule) are available on our website or at the M.D. Administration office.

Pest and Nuisance Control programs are in place and are administered by Agricultural Services either on behalf of the Province of Alberta or through municipal policy.

Pest and Nuisance Control programs are in place and are administered by Agricultural Services either on behalf of the Province of Alberta or through municipal policy.

Hunting Incentives – the M.D. currently manages two hunting incentive programs:

Wild Boar Program: will continue through 2011. Wild boar at large (outside captivity) are a declared agricultural pest in Alberta and as such, animals harvested may qualify for incentive reward. The reward is \$100 per animal, subject to conditions of eligibility.

Wolf Predation Mitigation Program: wolves causing livestock predation may be harvested for incentive reward of \$300 per animal, subject to conditions of eligibility.

Please note: Not all individuals will qualify for these programs. Interested participants are required to contact the Agricultural Fieldman BEFORE harvesting animals, to obtain details concerning eligibility.

Flood Control – the M.D. Beaver Control contractor will continue to conduct dam blasting and beaver control work during late spring and through the summer/fall of 2011. The work will be conducted to protect municipal infrastructure and, in some cases, to protect valuable agricultural lands from flooding. Landowners experiencing flood problems in the spring may contact the Agricultural Fieldman to request control work. Dam removal will be limited to the release of sufficient water to prevent back flooding, and only problematic beavers will be removed.

Continued next page...



Coyote Predation Management Program – the M.D. administers a provincial program to assist livestock producers who are experiencing excessive predation by coyotes. Under the Agricultural Pests Act, the coyote is considered a nuisance. As such, Alberta Agriculture has authorized the M.D. to administer the Coyote Predation Management Program and distribute selected control devices as a last resort for coyote control. Details may be obtained from our website or the Agricultural Fieldman.

V.S.I. Program - the M.D. has signed an agreement to continue the program through 2011, in cooperation with area veterinarians. The program offers subsidization of selected veterinary procedures for eligible V.S.I. members.

Pesticide Storage Container sites – the M.D. operates two pesticide container sites for disposal of pesticide jugs at the Regional Landfill and Banana Belt Transfer Station. Each fall, jugs are crushed and removed for recycling at no charge, which is a very valuable program for producers. However, one of the conditions for participation in the program is that containers have all external packaging removed (lids, labels and label booklets, cardboard) and the containers are safe for handling.

The pesticide container sites are for the disposal of empty, triple-rinsed jugs only... if pesticide containers are deposited in unacceptable condition (without packaging removed) the crushing / removal company may not complete the work, and the containers will be left at the site.

Collaboration – the M.D. works collaboratively with a number of area groups covering a wide range of issues that affect Agriculture within the region:

PCBFA (Peace Country Beef & Forage Association)

LSWC (Lesser Slave Watershed Council)

LSWC (Lesser Slave Watershed Council)

HPRAT (High Prairie Riparian Action Team)

SARDA (Smoky Applied Research & Demonstration Association)

NPARA (North Peace Applied Research Association)

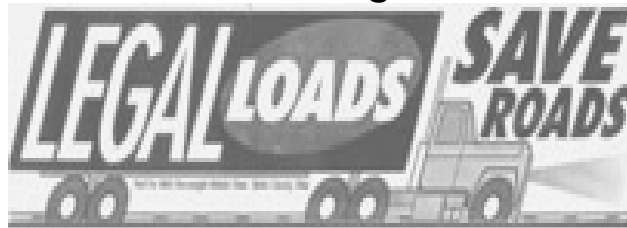
We are in the process of updating our Agricultural Services portion in the M.D. website to include a section that will advertise the activities of these organizations.

Agricultural Services programming will continue throughout the upcoming year, and we are looking for dedicated individuals who are interested in seasonal positions within the department, including Light Equipment Operators, Laborers, Inspectors, and Pesticide Applicators. Please watch for upcoming employment advertisements in the newspaper and on our website.

For information, please contact the Agricultural Fieldman at 780-523-5955.



MD of Big Lakes Peace Officer—Cory Bronson



With Spring just around the corner Road Bans will be placed on most MD roads.

For inquiries, call 780-523-5955 or visit the MD of Big Lakes' website at www.mdbiglakes.ca for up-to-date road ban information.

Overload Permits can be obtained through the MD Public Works Department at 780-523-5955.

Road Bans are placed on sensitive roads to protect them during their weakest point to minimize damage. When the frost comes out of a road, it becomes very soft under its top surface and is more likely to sustain damage. Road bans can also be on to limit very large loads, keeping them off of the roads to protect short stretches, allowing only smaller vehicle access.

Below are the axle limits showing your allowable 100% weight and the maximum allowable that would be required to reduce down to. Please note that tire size may result in a lower allowable weight.

Truck with Single Rear Axle (Dual Tires)

Axle Weight %	Steering Axle	Carry Axle	Truck Total
100%	7300 kilograms	9100 kilograms	16400 kilograms
90%	7300 kilograms	8200 kilograms	15500 kilograms
75%	7300 kilograms	6850 kilograms	14150 kilograms
50%	7300 kilograms	4550 kilograms	11850 kilograms

Truck with Tandem Rear Axle

Axle Weight %	Steering Axle	Carry Axle	Truck Total
100%	7300 kilograms	17000 kilograms	24300 kilograms

100%	7300 kilograms	17000 kilograms	24300 kilograms
90%	7300 kilograms	15300 kilograms	22600 kilograms
75%	7300 kilograms	12750 kilograms	20050 kilograms
50%	7300 kilograms	8500 kilograms	15800 kilograms

Tractor Semi-Trailer (Tandem Trailer Axles)

Axle Weight %	Steering Axle	Drive Axle	Trailer Axle	Truck & Trailer Total
100%	5500 kilograms	17000 kilograms	17000 kilograms	39500 kilograms
90%	5500 kilograms	15300 kilograms	15300 kilograms	36100 kilograms
75%	5500 kilograms	12750 kilograms	12750 kilograms	31000 kilograms
50%	5500 kilograms	8500 kilograms	8500 kilograms	22500 kilograms

Tractor Semi-Trailer (Tridem Trailer Axles with 3.0 meter to 3.7 meter spread)

Axle Weight %	Steering Axle	Drive Axle	Trailer Axle	Truck & Trailer Total
100%	5500 kilograms	17000 kilograms	24000 kilograms	46500 kilograms
90%	5500 kilograms	15300 kilograms	21600 kilograms	42400 kilograms
75%	5500 kilograms	12750 kilograms	18000 kilograms	39850 kilograms
50%	5500 kilograms	8500 kilograms	12000 kilograms	26000 kilograms

NOTE: 1) Maximum Gross Vehicle Weight - Cannot exceed the sum of the maximum allowable axle weights. 2) Maximum Tire Loading is the lesser of: (a) 3650 kg (b) 10 kg per mm width of tire. 3) All Tridem Axle units require a TAC permit from the Province of Alberta to operate at maximum legal weights.

So when the road ban signs go up, please remember that abiding by the indicated load limit will protect your road and save yourself and all MD rate payers the high cost of repairs.

Big Lakes FCSS—Director Sharon Strang

"Making a Difference in Your Community"

Are you retiring in 2011??? Big Lakes FCSS staff can assist you with the forms and make sure you apply for all the senior programs that you may be eligible for. Allow up to 6 months before your retirement date so your pensions arrive on time.

Income Tax time is coming. Pensioners must file a tax return in order to continue to receive both the Federal Guaranteed Income Supplement and the Provincial Alberta Seniors Benefit. Filing deadline is April 30th. If you are low income, Big Lakes FCSS may be able to assist you with your return. Please contact your local office to make an appointment.

Volunteer Appreciation Week is April 10-16th this year. Watch for the Big Lakes FCSS activities in your community to honor volunteers.

Seniors Week will be celebrated June 5-11th. Watch for upcoming posters and announcements.

The MD Barbeque will be held on Thursday June 23rd. Mark this date on your calendar as there will be great food and great prizes this year. This is an opportunity to meet with your MD Council member.

For further info please call your FCS Office Directors Office 780-776-0008

High Prairie FCSS 780-536-0062

Enilda FCSS 780-523-5925



High Prairie FCSS 780-536-0062

Enilda FCSS 780-523-5925

Faust FCSS 780-355-3896

Grouard FCSS 780-751-3806

Joussard FCSS 780-776-3811

Kinuso FCSS 780-775-3666



MD Grants Manager—Cathy Wilcox

Are you an ATV or Snowmobile enthusiast?

The Municipal District of Big Lakes met recently with the Town of Swan Hills to discuss the expansion of their Golden Triangle Trail System to link with trails in the Lesser Slave Lake area. There is support for this idea amongst the trail-riders in Swan Hills. Is there support for the idea in our own lakeshore communities?

If you would like to see trails developed south of Lesser Slave Lake, please call Cathy Wilcox at the MD Office. If there is enough interest, a meeting will be called to explore the idea further.

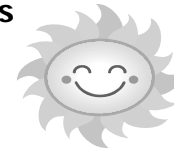


Contact: Cathy Wilcox @ 780-523-5955 or email grants@mdbiglakes.ca



Regional Landfill Authority & MD Transfer Stations

Summer Hours of Operation



Effective April 1st—September 30th

BANANA BELT (Pt. SW 11-73-17-W5)	Wednesday & Sunday 11:00 am - 7:00 pm
ENILDA (SE 01-74-16-W5)	Open 24 Hours "bagged household garbage only"
FAUST/KINUSO (SE 07-73-10-W5)	Wednesday 11:00 am - 7:00 pm Sunday 11:00 am - 9:00 pm
GROUARD (Pt. NE 32-75-14-W5)	Wednesday 12:00 noon - 8:00 pm Sunday 11:00 am - 9:00 pm
HEART RIVER (NE 31-76-17-W5)	Wednesday 1:00 pm - 9:00 pm Sunday 10:00 am - 5:00 pm
HP WEST/GILWOOD (NW 24-74-18-W5)	Open 24 Hours " bagged household garbage only"
JOUSSARD (NW 33-73-13-W5)	Wednesday 12:00 noon - 8:00 pm Sunday 11:00 am - 9:00 pm
REGIONAL LANDFILL (NW 09-73-15-W5)	<i>12kms South on East Prairie Road PH: 780-523-5760</i> Monday/Thursday/Saturday 10:00 am - 5:00 pm

**Census
jobs**

**Emplois au
recensement**

CCR-013



M.D. of Big Lakes

jobs

recensement

**35,000 jobs across
Canada**

**35 000 emplois à
travers le Canada**

Period of employment:

early March to end of July (start date varies by assignment)

Période de l'emploi :

début mars à la fin juillet (la date de début de l'emploi varie selon la tâche)

Rate of pay:

\$14.72 to \$18.04 per hour plus authorized expenses

Taux de rémunération :

14,72 \$ à 18,04 \$ l'heure plus les dépenses autorisées

Hours of work:

flexible, but must commit to at least 20 hours per week

Heures de travail :

flexibles, mais doit s'engager à travailler au moins 20 heures par semaine

Requirement:

must be 18 years of age or over

Exigence :

doit avoir 18 ans ou plus

**Apply now /
tell a friend**

www.census2011.gc.ca

1-866-773-2011 – TTY: 1-800-363-7629

**Postulez dès maintenant /
Dites-le à un ami**

www.recensement2011.gc.ca

1-866-773-2011 – ATS : 1-800-363-7629



M.D. of Big Lakes

On-Call (24 hrs)

523-5955

Toll Free:

1-866-523-5955

Happy Easter!



"NOTICE"

The MD of Big Lakes Office will be

CLOSED

April 22nd & April 25th

(Good Friday & Easter Monday)

